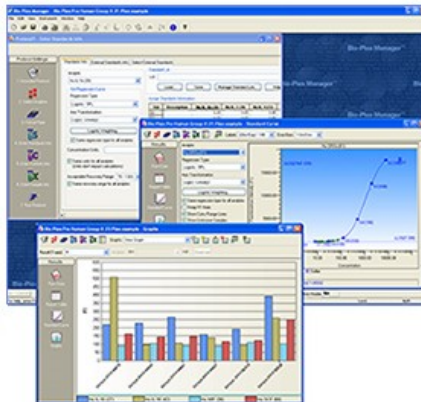


# Luminex Technology

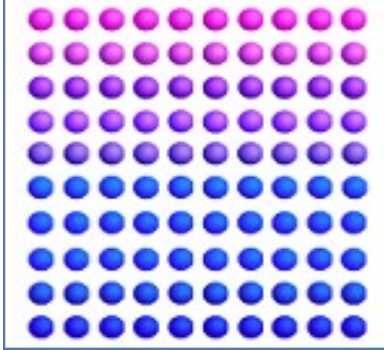
## Biomarker Multiplexing Assay

### Luminex xMAP® Technology

- Multi-analyte bead-based technology
- High-throughput detection and quantification
- Flexible panels for protein and nucleic acids targets
- Reproducible
- Cost-effective
- Versatile applications
  - Protein expression profiling
  - Cancer markers
  - Cellular signaling
  - Cytokines, chemokines and growth factors
  - Endocrine
  - Isotyping
  - Metabolic markers
  - Transcription factors
  - Gene expression profiling
  - And more...

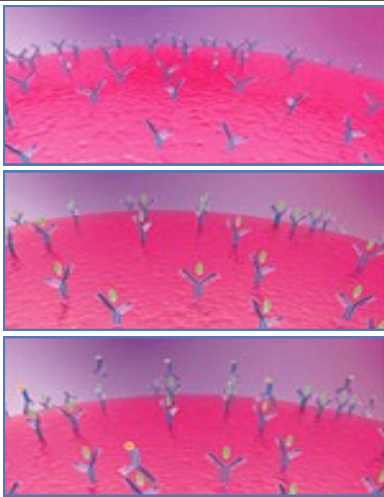


**100 xMAP microsphere sets**



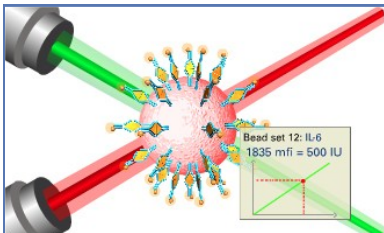
1. Microspheres with unique spectral signatures.

---



2. Fluorescent tagged antibodies detect captured analytes.

---



3. Lasers detect both bead dyes and tagged antibodies.

**Bead set 12: IL-6**  
1835 mfi = 500 IU

Sample	IL-6 (mfi)	IL-6 (IU)
1	1835	500
2	1835	500
3	1835	500
4	1835	500
5	1835	500
6	1835	500
7	1835	500
8	1835	500
9	1835	500
10	1835	500
11	1835	500
12	1835	500
13	1835	500
14	1835	500
15	1835	500
16	1835	500
17	1835	500
18	1835	500
19	1835	500
20	1835	500
21	1835	500
22	1835	500
23	1835	500
24	1835	500
25	1835	500
26	1835	500
27	1835	500
28	1835	500
29	1835	500
30	1835	500
31	1835	500
32	1835	500
33	1835	500
34	1835	500
35	1835	500
36	1835	500
37	1835	500
38	1835	500
39	1835	500
40	1835	500
41	1835	500
42	1835	500
43	1835	500
44	1835	500
45	1835	500
46	1835	500
47	1835	500
48	1835	500
49	1835	500
50	1835	500
51	1835	500
52	1835	500
53	1835	500
54	1835	500
55	1835	500
56	1835	500
57	1835	500
58	1835	500
59	1835	500
60	1835	500
61	1835	500
62	1835	500
63	1835	500
64	1835	500
65	1835	500
66	1835	500
67	1835	500
68	1835	500
69	1835	500
70	1835	500
71	1835	500
72	1835	500
73	1835	500
74	1835	500
75	1835	500
76	1835	500
77	1835	500
78	1835	500
79	1835	500
80	1835	500
81	1835	500
82	1835	500
83	1835	500
84	1835	500
85	1835	500
86	1835	500
87	1835	500
88	1835	500
89	1835	500
90	1835	500
91	1835	500
92	1835	500
93	1835	500
94	1835	500
95	1835	500
96	1835	500
97	1835	500
98	1835	500
99	1835	500
100	1835	500

### Value-added Services

- Experimental design
- Bioinformatics consultation
- Secure user portal access
- Data warehousing and analysis
- Pilot studies and protocol development

The Princess Margaret Genomics Centre  
 101 College Street, TMDT Rm 9-301  
 Toronto, Ontario, M5G 1L7  
 Tel: 416-581-7623 Fax: 416-597-0100  
[www.pmggenomics.ca](http://www.pmggenomics.ca)

Ver. 07/13